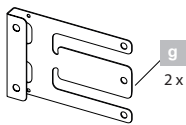
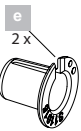
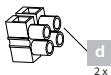
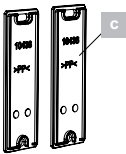
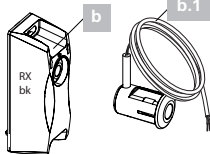
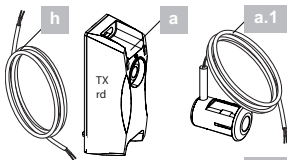
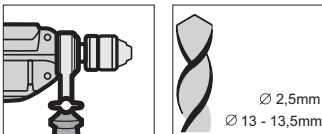
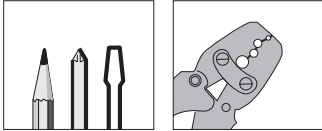


7028
S10929-00001
S10230-00001

Zargenlichtschranke 2-Draht /
Frame photo eye 2-wire /
Photocellule d'encadrement de porte 2 fils



4 015862 009555



ACHTUNG!

Die Montage von Lichtschranken darf nur von einer Fachkraft ausgeführt werden.



CAUTION!

Only experts may install photo eyes.



ATTENTION!

Le montage des photocellules doit être réalisé uniquement par le personnel qualifié.

Technische Daten / Technical data / Caractéristiques techniques

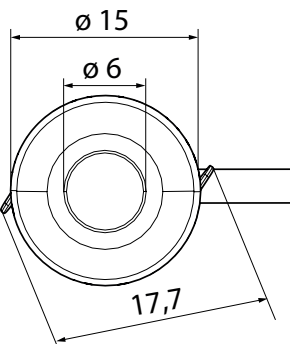
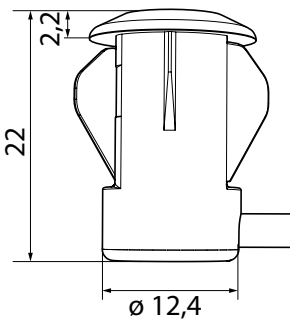
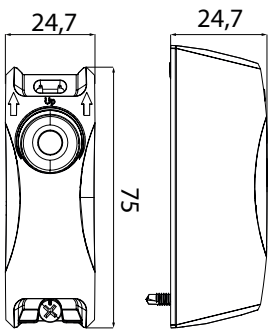
Reichweite (empfohlen) / Range (recommended) / Portée (recommandée)	0 ...6 m
Grenzreichweite / Range limit / Limite de portée	8 m
Temperaturbereich / Temperature range / Plage de températures	-20° C ... 60° C
Anschluss / Connection / Raccordement	2- Draht / 2-wire / 2 fils
Schutzart / Protection type / Indice de protection	IP 67 (Senoren)
Querschnitt Anschlussleitung / Connection cable cross-section / Section du câble de raccordement	max. 0,5 mm ²
Montagehöhe / Installation height / Hauteur de montage	< 300 mm

Lieferumfang / Scope of supply / Contenu de la livraison

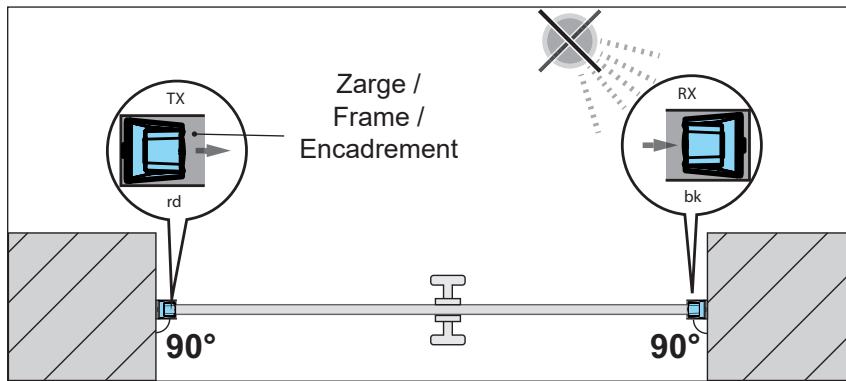
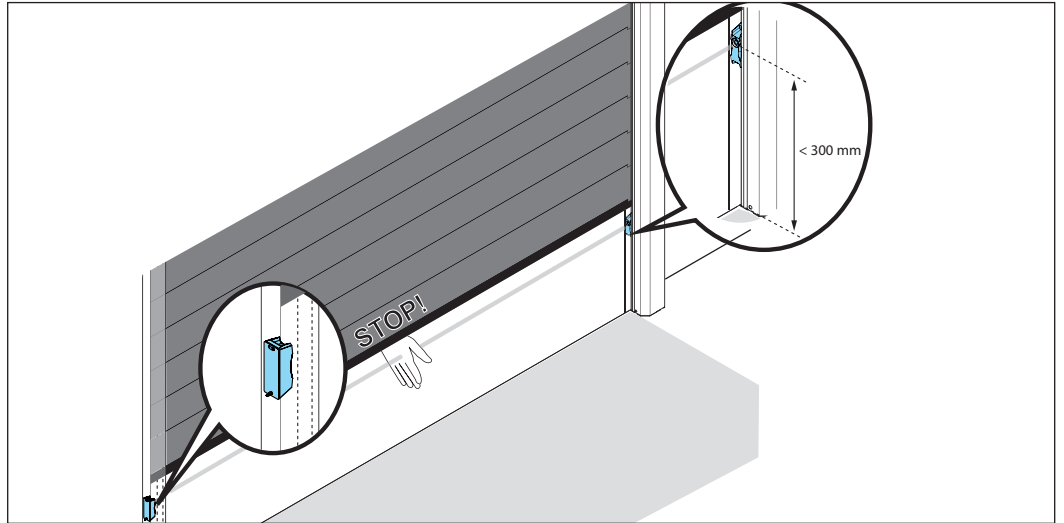
7028V000 / 7028V001	
a	Sender TX rot inkl. Gehäuse / TX transmitter red incl. housing / Émetteur TX rouge incl. boîtier
b	Empfänger RX schwarz inkl. Gehäuse / RX receiver black incl. housing / Récepteur RX noir incl. boîtier
d	2 x Europaklemme / 2 x Euro terminal / 2 x bornes pour l'Europe
f	4 x Schraube / 4 x screw / 4 x vis
c	2 x Rückenabdeckung für Wandmontage / 2x back cover for wall installation / 2 x caches arrière pour montage mural
h	20 m Verbindungskabel nur bei 7028V001 / 20 m connection cable only at 7028V001 / 20 m câble de raccordement uniquement avec 7028V001

S10929-00001	
a.1	Sender TX rot inkl. 10 m Verbindungskabel / TX transmitter red incl. 10 m connection cable / Émetteur TX rouge incl. 10 m câble de raccordement
b.1	Empfänger RX schwarz 10 m Verbindungskabel / RX receiver black incl. 10 m connection cable / Récepteur RX noir incl. 10 m câble de raccordement
e	2 x Befestigungskappen / 2 x mounting caps / 2 x capuchon de fixation

S10230-00001	
g	2 x Montageblech / 2 x mounting sheet / plaque de montage

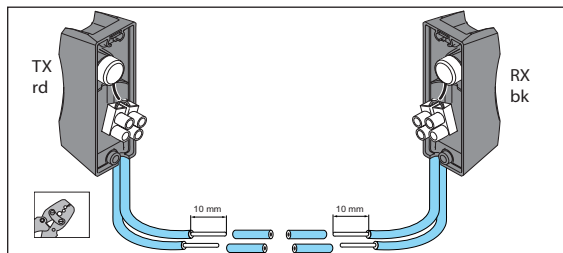


Info

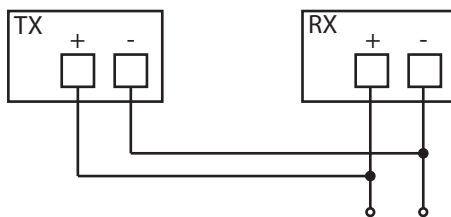
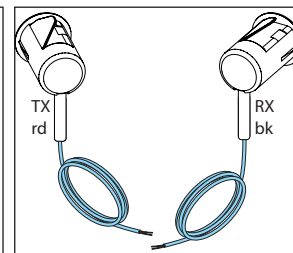


Anschluss / Connection / Raccordement

7028V000 / 7028V001



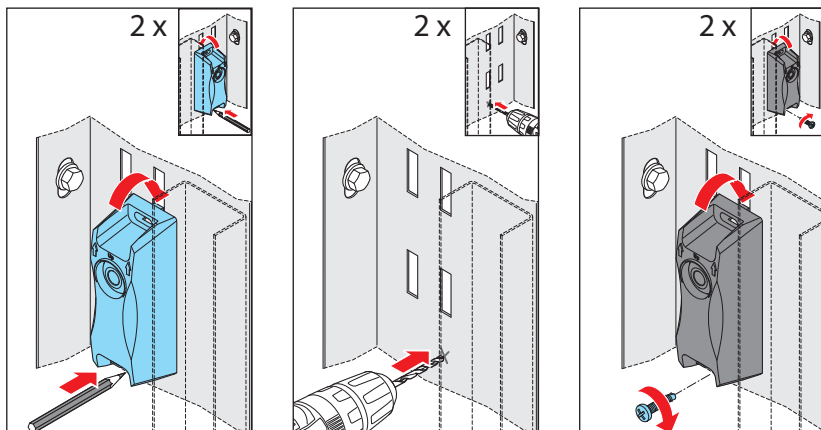
S10929-00001



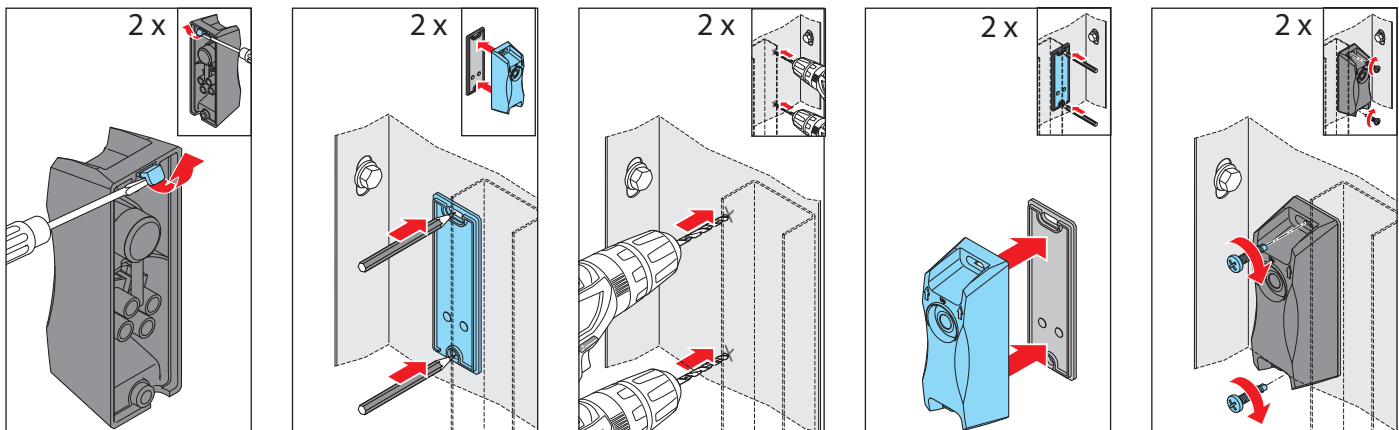
Steuerung / control unit / unité de commande

7028V000 / 7028V001

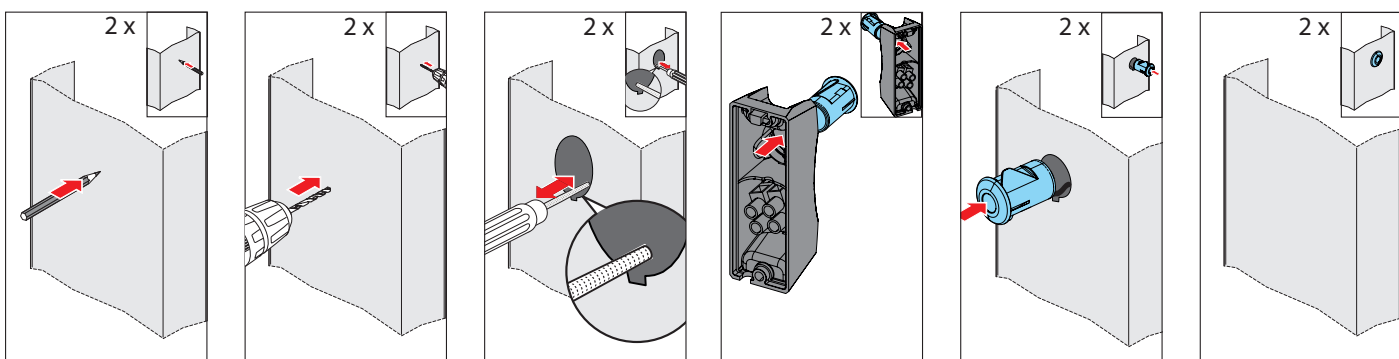
Montage Variante 1 / Installation variant 1 / Variante de montage 1



Montage Variante 2 / Installation variant 2 / Variante de montage 2



Montage Variante 3 / Installation variant 3 / Variante de montage 3

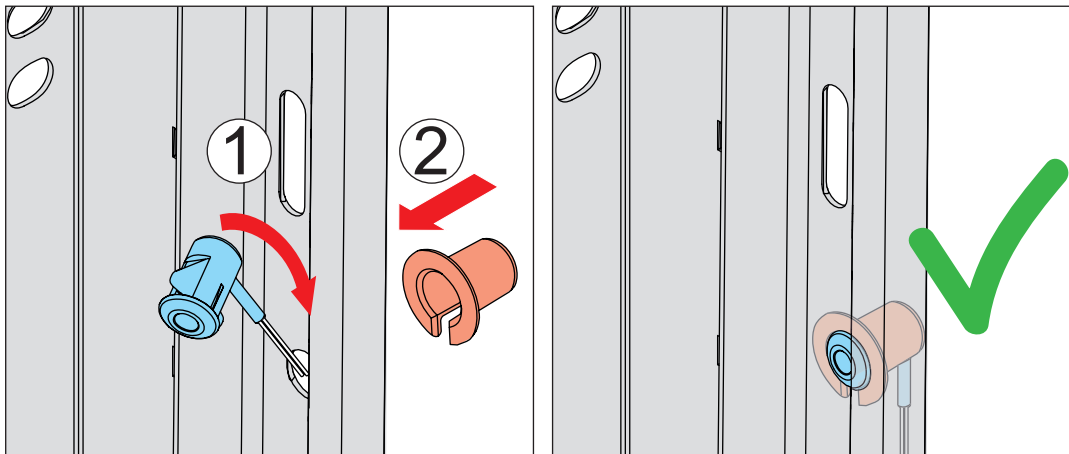


*

Blechdicke / Plate thickness / Épaisseur de tôle	Lochdurchmesser / Hole diameter / Diamètre de l'orifice
1 mm	13 mm
2 mm	13 - 13,5 mm
3 mm	13 - 13,5 mm

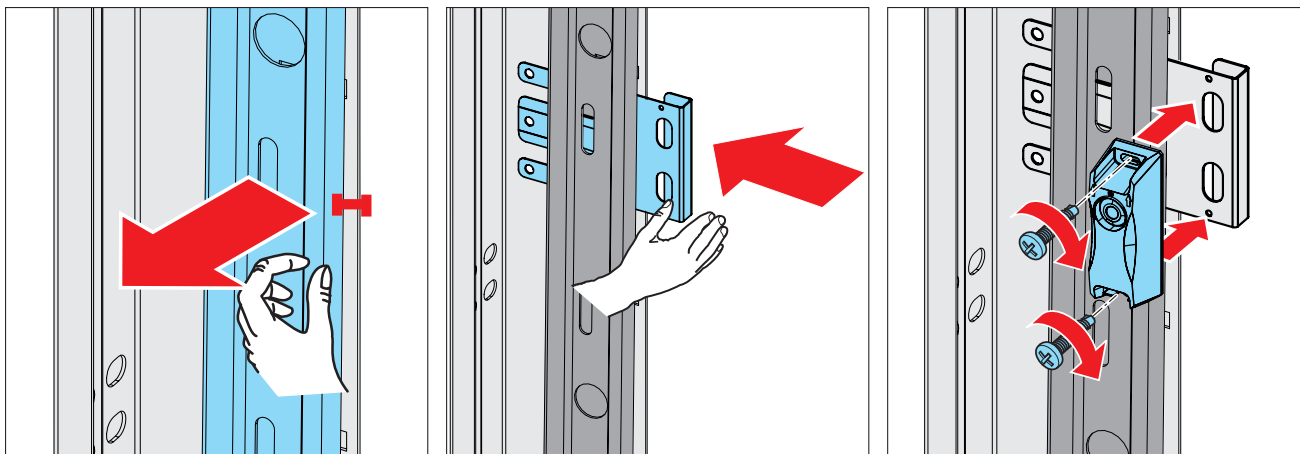
S10929-00001

Montage / Installation / Variante de montage



S10230-0000

Montage / Installation / Variante de montage



Ausrichtung der Lichtschranke / Alignment of the photo eye / Orientation de la photocellule

